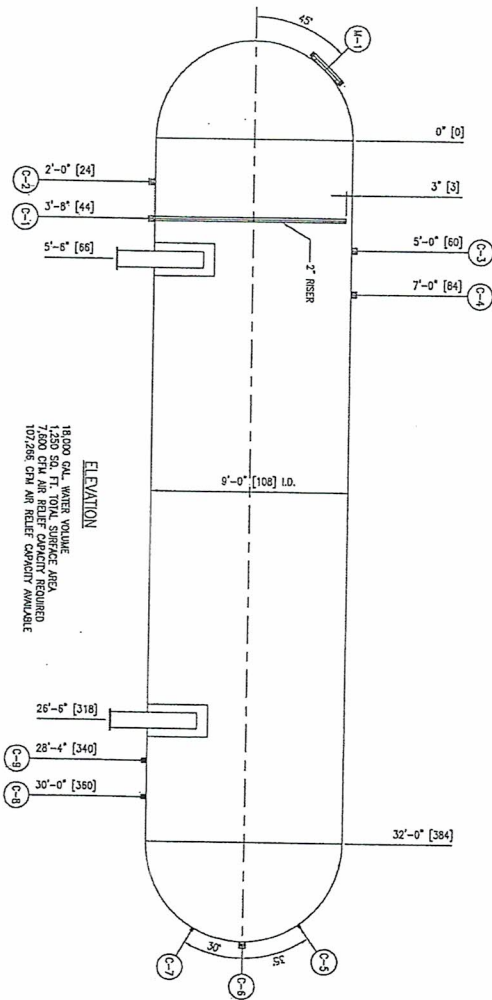
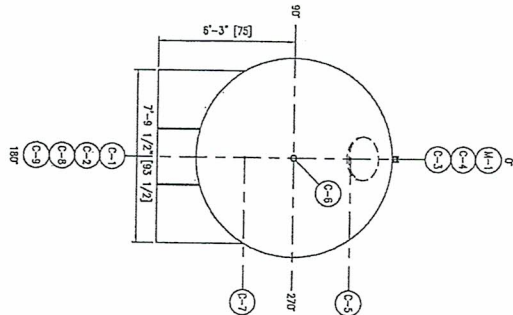


O:\126 Ethanol Plant\Engineering\Book 01 - 126\Tab 05 - 126\Draws\12000 Chemicals\G126-1212-TP12401rev0.dwg

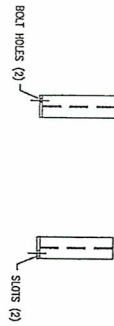


18,000 GPM WATER VOLUME
1,320 SQ. FT. TANK SURFACE AREA
7,000 CFM AIR RELIEF CAPACITY REQUIRED
107,266 CFM AIR RELIEF CAPACITY AVAILABLE

ORIENTATION PLAN



① SUPPORT SADDLE DETAIL - CONCEPT
SCALE: 3/4"=1'-0"
NUMBER OF ANCHOR POINTS SHALL BE 4.
MINIMUM DIAMETER OF ANCHOR BOLTS SHALL BE 1 1/2".
VENDOR RESPONSIBLE FOR FINAL DESIGN
BASED ON SITE SPECIFIC CONDITIONS.



ITEM	SIZE	RATING	DESCRIPTION
C-1	2"	3000#	FILL COUPLING (W/OUT)
C-2	2"	3000#	FILL COUPLING (FILL)
C-3	2"	3000#	FILL COUPLING (RELIEF VALVE W/OUT)
C-4	2"	3000#	FILL COUPLING (RELIEF VALVE W/OUT)
C-5	3/4"	3000#	FILL COUPLING (GROSS LIQUID LEVEL)
C-6	3/4"	3000#	FILL COUPLING (FILL COUPLING)
C-7	1 1/4"	3000#	FILL COUPLING (PRESSURE TIE)
C-8	1 1/4"	3000#	FILL COUPLING (PRESSURE TIE)
C-9	1 1/4"	3000#	FILL COUPLING (PRESSURE TIE)
U-1	16"	-	LIFTING LUG - DETAIL D-2

VENDOR SUPPLIED AND INSTALLED:
CS BOLTS AND NUTS - 3000#
UNLESS OTHERWISE INDICATED.

- NOTES:
1. SEE SPEC. FOR LOCAL ADOPTED CODE.
 2. THE TANK SHALL BE LOCATED OUTSIDE BUILDING.
 3. THE TANK SHALL BE DESIGNED AND CONSTRUCTED TO WITHSTAND THE FULL DESIGN PRESSURE AND TEMPERATURE OF THE TANK.
 4. ALL EXTERNAL CARBON STEEL TO BE BLAST CLEANED AND PRIMER PAINTED.
 5. VESSEL TO BE CLEANED INSIDE & OUTSIDE, FREE OF DIRT, GRASS, TALL GRASS, WELD SPATTER, ETC.
 6. TANK MUST BE POST WELD HEAT TREATED AS PER API 20/ASME BOILER & PRESSURE VESSEL CODE.
 7. DIMENSIONS IN [] ARE IN INCHES.

REFER TO ATTACHED ICM TANK AND VESSEL SPECIFICATION DATA DOCUMENT FOR ADDITIONAL REQUIREMENTS. RETURN SIGNED COPY OF ICM TANK AND VESSEL SPECIFICATION DATA DOCUMENT WITH SUBMITTAL DOCUMENTS.

DESIGN CODE	NOTES
DESIGN PRESS: 2.000 PSI	DESIGN PRESS: 2.000 PSI
FLUID: AMMONIUM NITRATE	FLUID: AMMONIUM NITRATE
OPENING PRESS: 2.000 PSI	OPENING PRESS: 2.000 PSI
MAX. WEIGHT: 32,000#	MAX. WEIGHT: 32,000#
TYPE: 3000#	TYPE: 3000#
THICKNESS: 1/2"	THICKNESS: 1/2"
TOP HEAD: HEMISPHERICAL	TOP HEAD: HEMISPHERICAL
BOTTOM HEAD: HEMISPHERICAL	BOTTOM HEAD: HEMISPHERICAL
SUPPORTS: SADDLE	SUPPORTS: SADDLE
BOLTS: CARBON STEEL	BOLTS: CARBON STEEL
INSULATION: NO	INSULATION: NO

