

INVOICE NO. **M**

OLD TO

Mr. Wayne Jones
Rt. 2
Huron, S.D. 57350

INVOICE DATE
February 28, 1976
TERMS

Paid

Our Order No.	Our S.O. No.	FOB	Shipped Via	Date Shipped
Shipped To				Salesman
Quantity	Serial No.	Description	Amount	

1 61M3215 New 12G Motor Grader w/Alternator, 14' Hyd. SS & Tilt Blade, Hyd. System for Ripper, Tilt & Sideshift, Heater, 1400 X 24 12 Ply Tires, Ripper Scarifier with 9 Teeth, Accelerator Decel, ROPS Cab, Cab Lights, Lock-Unlock Differential, Suspension Seat, 2' Left Blade Ext. 10" Rims, Hood Panels, Vandalism Group, Coolant Heater and Rear Light.

KMC will switch tires on front of new machine to trade-in and V.S.

Tax

\$58,740.00
2,349.60
\$61,089.60

1 14K605 Trade-In:
120 Cat Motor Grader With New Tires, Rebuilt Engine, Air Conditioner, Hydraulic Sideshift Blade W/2" Ext. Snow Wing and All Other Attachments.

F.O.B. Aberdeen, S.D. KMC

\$28, 485.00

Cash With Order

32,604.60

Net Due

00

PACKING LIST

Invoice Number	
Invoice Date	Page
1/7/2015 13:50:11	1 of 1
SERVICE ORDER NUMBER	

Bill To: JONES CONSTRUCTION
40230 US HWY 14
HURON, SD 57350
605-352-5707

Ship To: JONES CONSTRUCTION
40230 US HWY 14
HURON, SD 57350
US

Ordered By: Wayne Jones

Carrier: Will Call
Tracking #:

Delivery Instructions:

PO Number					Originating Branch		Terms Description		Net Due Date	
CAT 12G PUMP							Net 30		2/6/2015	
Order Date		Pick Ticket No		Primary Salesrep Name				Taker		
12/8/2014 08:43:40										
Quantities					Item ID Item Description			Unit Price		Extended Price
Ordered	Shipped	Remaining	UOM	Disp.						

*****Service Item*****

1.00	1.00	0.00	EA	PUMP REPAIR	2,682.6100	2,682.61
				pump repair		

Serial Number: N/A

Order Line Notes: CAT 12G S# 6IM3215 - MAIN PUMP --
LEAKS AT SHAFT AND OIL SAMPLE COME
BACK HIGH IN COPPER
REBUILD PISTON PUMP -- FOUND HEAVY
WEAR AND TEAR BUT NOTHING LET GO --
REBUILT AND TESTED

Total Pieces:	1	Total Lines:	1	Total Weight:	0	SUB-TOTAL:	2,682.61
						SOUTH DAKOTA:	107.30
						AMOUNT DUE:	2,789.91

Workorder W/O	Status	Seg	SegStatus	JobCode	CompCode	Job Code	CodeDescript	Component	CodeDescript
CATERPILLAR		12G	061M03215	1975					
27-03	S025947	Invoiced	1	Closed	20	1251 RECONDITION		FUEL INJECTION PUMP	
2-02	S017257	Invoiced	1	Closed	23	6154 REPAIR		CIRCLE ASSEMBLY	

UNIT INFORMATION

Unit: Cust No. C48525
Equip Make: Caterpillar
Equip Model: 12G
Equip Serial: 61M03215
Component: Transmission

Eng Make:
Eng Model:
Eng Serial:

PM SERVICE INFORMATION

Job Site:
Oil Brand: Unspec
Oil Blend:
Oil Viscosity: Unspec
PM:

Evaluation / Recommendation (for sample taken on 10/27/2014 by 3653)

Test results appear to indicate normal levels for this compartment. More data and samples are needed to form a good wear trend. Continue to monitor by sampling at the recommended interval.

Butler SOS Analyst
Jesse Hill



SAMPLE INFORMATION			ELEMENTAL ANALYSIS (parts per million)																				OIL CONDITION								
Date Taken	Hrs/Miles		Cu	Fe	Cr	Ni	Ti	V	Ag	Pb	Sn	Al	Si	Na	K	Mo	B	Ba	Ca	Mg	Mn	P	Sb	Zn	TAN	TBN	FTIR Analysis				
	On Unit	On Oil	Copper	Iron	Chrome	Nickel	Titan	Vanad	Silver	Lead	Tin	Alum	Silicon	Sodium	Potass	Moly	Boron	Barium	Calcium	Magnes	Mangan	Phosph	Antimon	Zinc	Acid	Base	Soot	Sulf	Oxid	Nitr	
10-27-14	2896		56	8	0	0	0	0	0	25	3	1	12	2	1	4	84	0	3256	86	0	1104	1	1387							

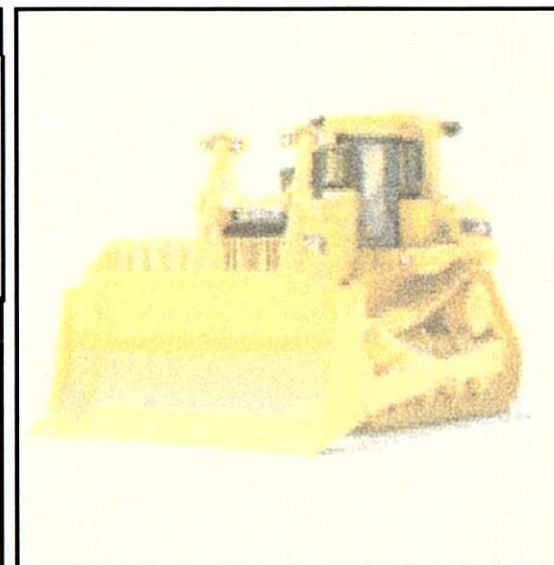
OIL CHANGE HISTORY							PARTICLE COUNT (per 1 mL)								ISO	PVI	PQ	PHYSICAL		
Date Taken	Changed		Oil Added	Label Visc	Visc SAE	Visc cSt 100 C	>4u	>6u	>10u	>14u	>21u	>25u	>38u	>70u	ISO Code	Particle Volume	Ferrous Debris	Anti-Freeze	Fuel Dilution	Water
	Oil	Filter																		
10-27-14	No	No		Unspec	20	8.1	49005	4749	493	109	17	8	2		23/19/14	1	9	N	N	N

FYI - This sample took 9 days to reach the lab.

When Oil and Coolant sampling, remember to provide complete and accurate information on the Sample Labels.

Wayne Jones Construction
40230 US Hwy 14
Huron, SD 57350-7913

UNIT INFORMATION			PM SERVICE INFORMATION		
Unit:	Cust No.	C48525	Eng Make:		Job Site:
Equip Make:	Caterpillar		Eng Model:		Oil Brand: Unspec
Equip Model:	12G		Eng Serial:		Oil Blend:
Equip Serial:	61M03215				Oil Viscosity: Unspec
Component:	Hydraulic				PM:
Evaluation / Recommendation (for sample taken on 10/27/2014 by 3653)					
Copper is higher than expected. The other test results appear to indicate normal levels for this compartment. More data and samples are needed to form a good wear trend. Copper could be due to a normal chemical reaction between this oil & the copper parts or it could indicate a problem. Check filter for visible metal. Continue to monitor by sampling at the recommended interval.					
Butler SOS Analyst Jesse Hill					



SAMPLE INFORMATION			ELEMENTAL ANALYSIS (parts per million)																				OIL CONDITION								
Date Taken	Hrs/Miles		Cu	Fe	Cr	Ni	Ti	V	Ag	Pb	Sn	Al	Si	Na	K	Mo	B	Ba	Ca	Mg	Mn	P	Sb	Zn	TAN	TBN	FTIR Analysis				
	On Unit	On Oil	Copper	Iron	Chrome	Nickel	Titan	Vanad	Silver	Lead	Tin	Alum	Silicon	Sodium	Potass	Moly	Boron	Barium	Calcium	Magnes	Mangan	Phosph	Antimon	Zinc	Acid	Base	Soot	Sulf	Oxid	Nitr	
10-27-14	2896		70	12	0	0	0	0	4	8	0	1	11	1	1	2	64	0	3222	50	1	1037	0	1352							

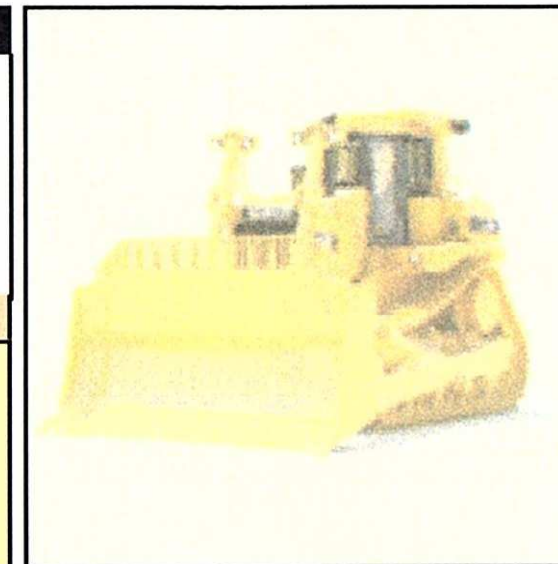
OIL CHANGE HISTORY							PARTICLE COUNT (per 1 mL)								ISO	PVi	PQ	PHYSICAL		
Date Taken	Changed		Oil Added	Label Visc	Visc SAE	Visc cSt 100 C	>4u	>6u	>10u	>14u	>21u	>25u	>38u	>70u	ISO Code	Particle Volume	Ferrous Debris	Anti-Freeze	Fuel Dilution	Water
	Oil	Filter																		
10-27-14	No	No		Unspec	10W	6.6	41226	4036	624	182	45	28	8	2	23/19/15	2	9	N	N	N

FYI - This sample took 9 days to reach the lab.

When Oil and Coolant sampling, remember to provide complete and accurate information on the Sample Labels.

 Wayne Jones Construction
 40230 US Hwy 14
 Huron, SD 57350-7913

UNIT INFORMATION		PM SERVICE INFORMATION	
Unit:	Cust No. C48525	Eng Make:	Job Site:
Equip Make: Caterpillar		Eng Model:	Oil Brand: Unspec
Equip Model: 12G		Eng Serial:	Oil Blend:
Equip Serial: 61M03215			Oil Viscosity: Unspec
Component: Diesel Engine			PM:
Evaluation / Recommendation (for sample taken on 10/27/2014 by 3653)			
No Hours On Oil given.			
The test results appear to indicate normal levels for this type of compartment. More data and samples are needed to form a good wear trend. Continue to monitor by sampling at the recommended interval.			
Butler SOS Analyst Scot			



SAMPLE INFORMATION			ELEMENTAL ANALYSIS (parts per million)																				OIL CONDITION							
Date Taken	Hrs/Miles		Cu	Fe	Cr	Ni	Ti	V	Ag	Pb	Sn	Al	Si	Na	K	Mo	B	Ba	Ca	Mg	Mn	P	Sb	Zn	TAN	TBN	FTIR Analysis			
	On Unit	On Oil	Copper	Iron	Chrome	Nickel	Titan	Vanad	Silver	Lead	Tin	Alum	Silicon	Sodium	Potass	Moly	Boron	Barium	Calcium	Magnes	Mangan	Phosph	Antimon	Zinc	Acid	Base	Soot	Sulf	Oxid	Nitr
10-27-14	2896		28	39	0	0	0	0	8	0	0	3	14	5	2	44	3	0	1269	900	1	1034	4	1281			4	16	12	7

OIL CHANGE HISTORY							PARTICLE COUNT (per 1 mL)								ISO	PVi	PQ	PHYSICAL		
Date Taken	Changed		Oil Added	Label Visc	Visc SAE	Visc cSt 100 C	>4u	>6u	>10u	>14u	>21u	>25u	>38u	>70u	ISO Code	Particle Volume	Ferrous Debris	Anti-Freeze	Fuel Dilution	Water
	Oil	Filter																		
10-27-14	No	No		Unspec	40	14.2										0	34	N	N	N

FYI - This sample took 9 days to reach the lab.

When Oil and Coolant sampling, remember to provide complete and accurate information on the Sample Labels.

Wayne Jones Construction
40230 US Hwy 14
Huron, SD 57350-7913

<u>12 G</u>	<u>By</u>	<u>Approx Date</u>
- Trans Overhauled by Butler		Early 90's?
- Engine Overhauled ?		Late 80's
- Water Pump	T+T Services Self	2010
- Air Compressor Upgrade (2 Cyl. Compressor)	Self	2013
- Cyl. Head Rebuild	Self/Mapa	2000
- Tandem Housing Rebuild	Self/Melby Electric	1998
- Circle Rebuild (Teeth)	Butler-SF	2002
- Front Axle Steering linkage	Self	2012
- Paint	A-1 Auto	2000
- Fuel Pump + Nozzles	Self/Butler	2003
- Glow Plugs + Wiring Harness	Self	2013