

# AED6500XE

# APOLLO<sup>®</sup>

POWER YOUR DREAMS

**Apollo Generators are built for durability and reliability.** These generators will meet the needs of contractors, home owners, or recreational users. Powered by an EPA green friendly diesel engine with an all copper wound alternator head, this design will provide clean stable power for all your needs.

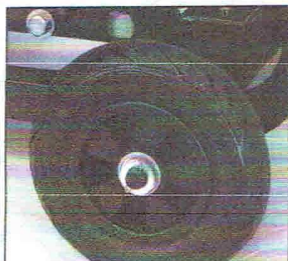
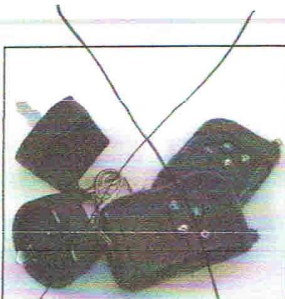
**Fuel Tank & Gauge-**  
easy to read gauge and large tank for hours of operation

**Steel Frame-**  
oversized square tube frame for added strength and protection

**Folding Handles-**  
handles fold down, out of the way when not in use

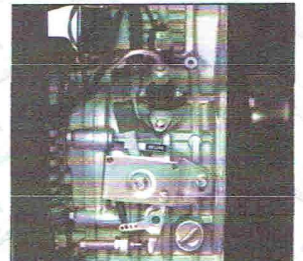
**Fuel Pump-**  
electronically controlled pump

**Heavy Duty Wheels-**  
hard rubber wheels will never go flat



## standard features

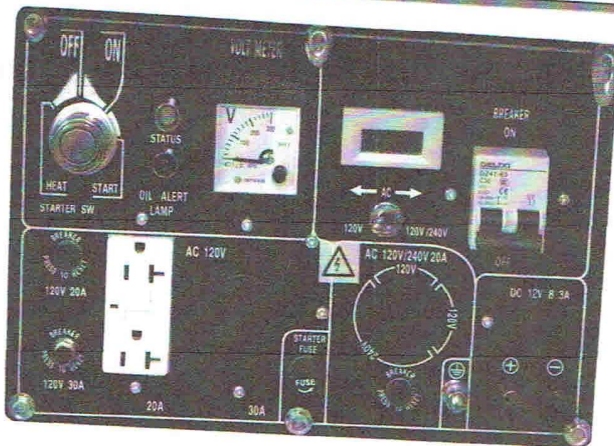
- \* ~~Full Function Remote Start~~
- \* ~~Cold Weather Start~~
- \* Shock Mounted Chassis
- \* Mobility Kit
- \* Storage Cover





## CONTROL PANEL

Four Position Ignition Switch, Oil Alert Lamp, Volt Meter, Digital Hour Meter, Voltage Selector Switch, AC Circuit Breaker, Individual Circuit Protection, Grounding Terminal, 12V DC Output



### OUTLETS

- 2 - 20A GFIC
- 1 - 30A AC 120V Twist Lock
- 1 - 20A 120V/240V Twist Lock
- 1 - DC 12V Charger

## THE POWER OF OHV

**Apollo 10HP engines** offer you the competitive edge with superior performance and economy. The direct injected fuel system powered by an electronically controlled pump, along with OHV technology, provides a cool, clean combustion cycle

which results in longer engine life. Other great features of Apollo engines include a pressurized lubrication system to all internal components, low oil shut down protection, a forged steel balanced crankshaft, and cast iron cylinders which will provide optimum performance and superior strength in high PTO torque environments.

### Fuel Consumption

At 1/2 Load	At 3/4 Load	At Full Load
0.34 gallons/hour	0.45 gallons/hour	0.58 gallons/hour

## SPECIFICATIONS

### A full line of parts are available!

Apollo products are supported through an extensive network that provides parts and technical support to consumers and dealers.

Visit our Parts Store at  
[www.apolloindustrial.com](http://www.apolloindustrial.com)

Model Number	AED6500XER
Starting Watts	6300
Running Watts	5000
Engine	10HP, OHV
Engine Type	4-Stroke, Diesel
Engine Displacement	418 cc
Starting Method	Electric / Remote / Manual
Battery	332 CCA
Engine Protection	Low Oil Shut Down
Fuel Tank	3.25 Gal
Hour Meter	Digital
Handle Style	Folding
Wheel Type	7" Hard Rubber
Dimensions (L"xW"xH")	31"x21.5"x29"
Product Weight	298 lbs
Ltd. Warranty - Residential	1 Year / 1000 Hrs
Ltd. Warranty - Commercial	6 Months / 500 Hrs

Specifications subject to change without notice.

**APOLLO**  
Power Industrial Corp.

1814 Landrum Drive  
Farmington, MO 63640  
573-756-5626

